



Nicholas McBurney
 Mar 21, 2019
 12:13 pm

FIRE SPRINKLER SYSTEM FOR AMODEO - NEW SPA BLDG. 12102 RED GATE NEVADA COUNTY, CA

GENERAL NOTES

1. SYSTEM DESIGN AND INSTALLATION SHALL COMPLY WITH NFPA 13D 2016 EDITION AND ALL LOCAL CODES AND THE NEVADA COUNTY CONSOLIDATED FIRE DEPARTMENT.
2. SYSTEM DESIGN BASIS:
 HYDRAULICALLY MOST DEMANDING 2 SPRINKLERS.
3. WATER SUPPLY INFORMATION:
 OWNER TO PROVIDE WELL, PUMP AND WATER STORAGE TANK. TANK SHALL CONTAIN MINIMUM 10 MIN. SUPPLY OF 320 GALLONS. PUMP SHALL PROVIDE A MINIMUM OF 40 GPM AT 44 PSI AT DISCHARGE.
4. ALL PIPE SHALL BE:
 UNDERGROUND - SCH. 40 PVC
 RISER - CPVC/COPPER
 INTERIOR SPRINKLER PIPE - CPVC
5. MANUFACTURERS OF RESIDENTIAL SPRINKLERS PUBLISH INFORMATION REGARDING THE SPACING OF THEIR SPRINKLERS WITH RESPECT TO HEAT PRODUCING DEVICES (FIREPLACES, RANGES, OVENS, HEATING VENTS, WATER HEATERS, FURNACES, ETC.) WHETHER OR NOT ALL HEAT PRODUCING DEVICES ARE SHOWN ON THE PLAN. PROPER MINIMUM DISTANCES MUST BE MAINTAINED. SEE HEAT SOURCE CHART.
6. THE MINIMUM DISTANCE BETWEEN ANY 2 RESIDENTIAL SPRINKLERS SHALL NOT BE LESS THAN 8 FEET.
7. THE MAXIMUM DISTANCE BETWEEN ANY 2 RESIDENTIAL SPRINKLERS ON THIS PROJECT IS HYDRAULICALLY LIMITED TO 16 FEET. SPRINKLERS SHALL NOT EXCEED 8 FEET FROM ANY WALL.
8. THE MINIMUM DISTANCE A SPRINKLER CAN BE LOCATED FROM A WALL IS 4 INCHES.
9. INSTALLATION OF ALL RESIDENTIAL SPRINKLERS WILL BE IN STRICT COMPLIANCE WITH THE MANUFACTURERS INSTALLATION GUIDE.
10. PROVIDE PROPER SIGNAGE PER CRC 313.31 AND NFPA 13D 4 ALL APPLICABLE LOCAL CODES.

SYMBOL LEGEND

- CONCEALED RESIDENTIAL PENDENT SPRINKLER
- RECESSED RESIDENTIAL PENDENT SPRINKLER
- OR UPRIGHT SPRINKLER
- NEW SPRINKLER PIPE
- ⊕ SYSTEM RISER
- CHANGE IN PIPE ELEVATION
- ⊠ HYDRAULIC REFERENCE POINT
- PIPE HANGER

HANGER SPACING OF VARIOUS PIPING MATERIALS	
PIPING MATERIALS	PIPE SIZE
STEEL	1/2" - 1 1/2"
CPVC	1/2" - 1 1/2"
COPPER	1/2" - 1 1/2"
STEEL	2" - 3"
CPVC	2" - 3"
COPPER	2" - 3"
STEEL	4" - 6"
CPVC	4" - 6"
COPPER	4" - 6"
STEEL	8" - 10"
CPVC	8" - 10"
COPPER	8" - 10"
STEEL	12" - 18"
CPVC	12" - 18"
COPPER	12" - 18"

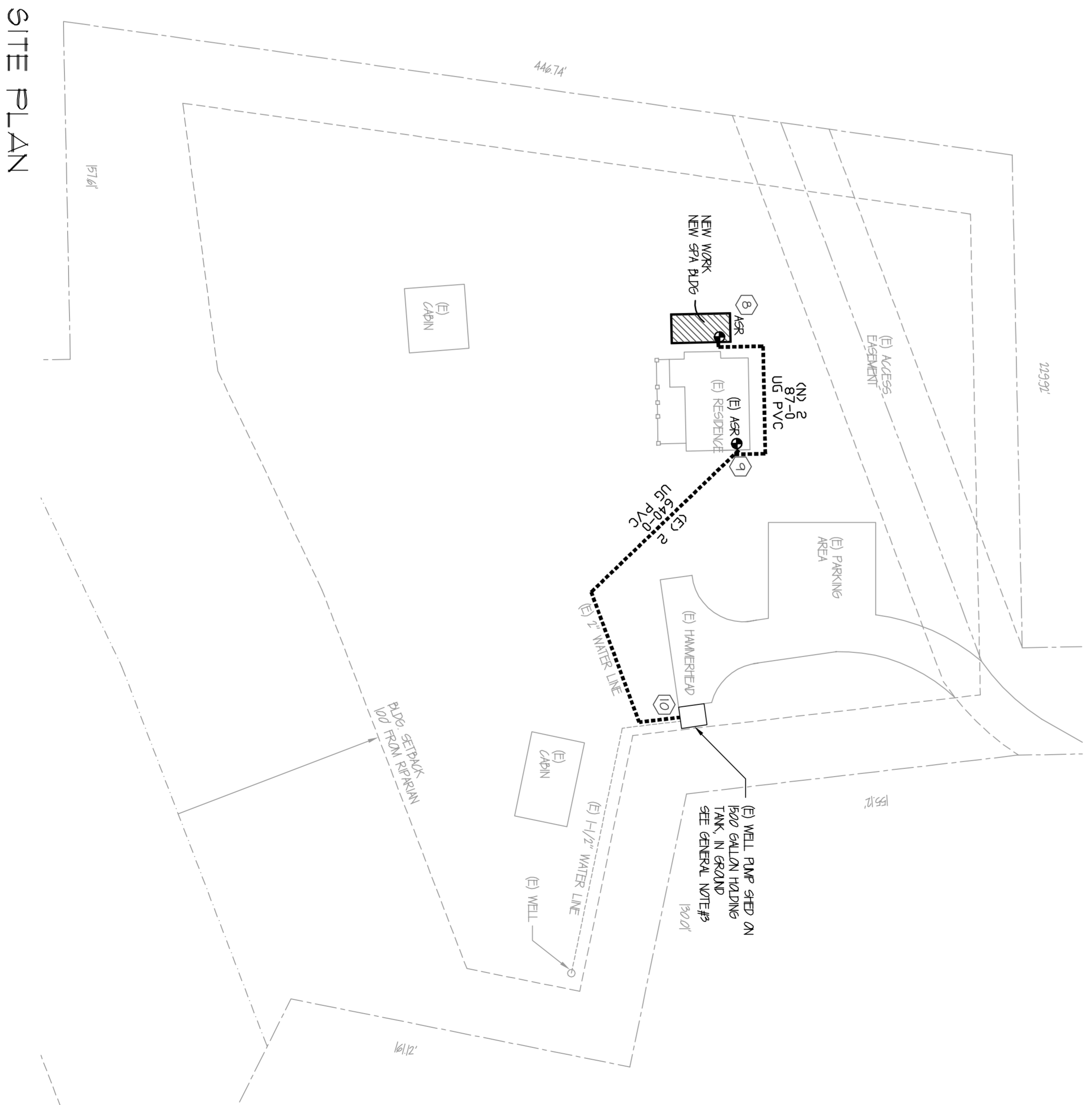
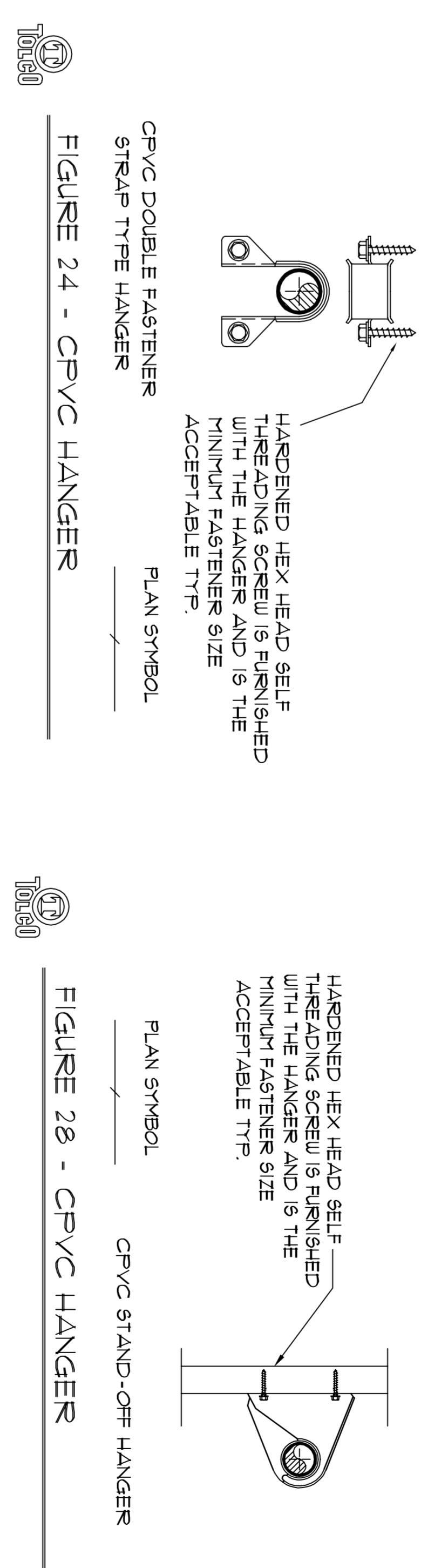
TYCO SPRINKLERS

PROXIMITY OF SPRINKLERS TO HEAT SOURCES	ORDINARY TEMP.	INTERMEDIATE TEMP.
LATERAL DISTANCE FROM THE SIDES OF AN OPEN OR RECESSED HEARTH FIREPLACE	3'-0"	1'-0"
RADIAL DISTANCE FROM A RECESSED HEARTH FIREPLACE	5'-0"	3'-0"
LATERAL DISTANCE FROM THE SIDES OF A WOOD OR COAL BURNING STOVE	3'-6"	1'-0"
LATERAL DISTANCE FROM THE SURFACE OF A KITCHEN RANGE	1'-6"	0'-9"
LATERAL DISTANCE FROM A WALL OVEN	1'-6"	0'-9"
LATERAL DISTANCE FROM THE SURFACE OF HOT AIR FLUES	1'-6"	0'-9"
LATERAL DISTANCE FROM UNINSULATED HEATING DUCTS	1'-6"	0'-9"
LATERAL DISTANCE FROM UNINSULATED WATER PIPES	1'-0"	0'-6"
LATERAL DISTANCE FROM THE EDGES OF A CEILING MOUNTED HOT AIR DIFFUSER	2'-0"	1'-0"
LATERAL DISTANCE FROM THE SIDES OF A WALL MOUNTED HOT AIR DIFFUSER	2'-0"	1'-0"
LATERAL DISTANCE FROM THE FRONT OF A WALL MOUNTED HOT AIR DIFFUSER	3'-0"	1'-6"
LATERAL DISTANCE FROM THE SURFACE OF A WATER HEATER OR FURNACE	0'-6"	0'-3"
LATERAL DISTANCE FROM A 250 WATT OR LESS, LIGHT FIXTURE	0'-6"	0'-3"
LATERAL DISTANCE FROM A 250 WATT TO 499 WATT LIGHT FIXTURE	1'-0"	0'-6"

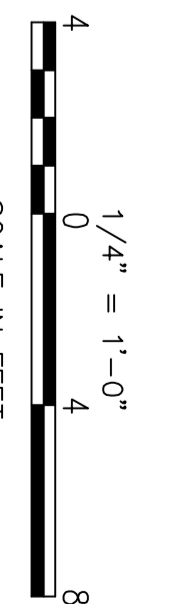
Hanger Spacing Notes

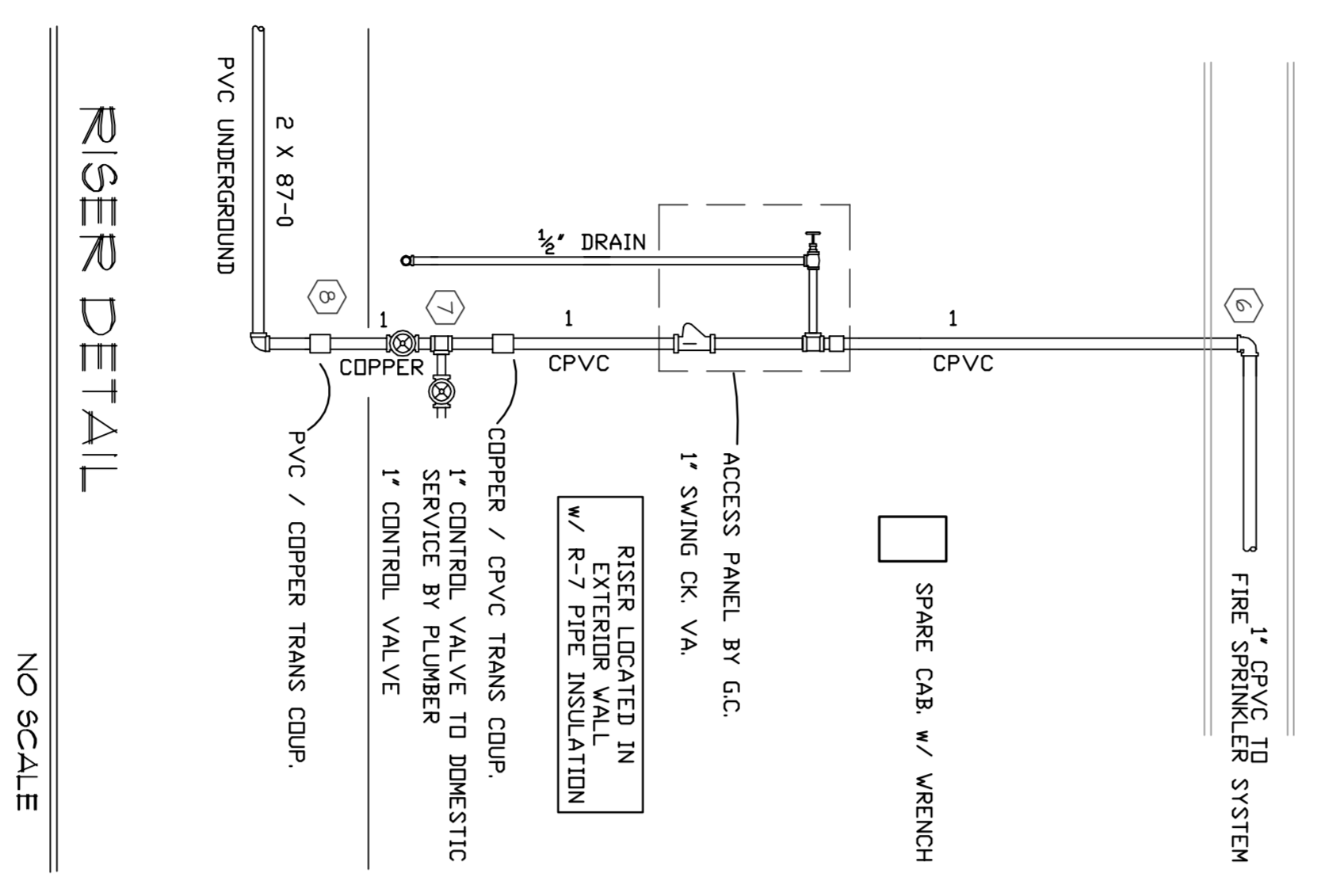
1. ALL LENGTHS SHOWN ARE THE MAXIMUM RECOMMENDED DISTANCE BETWEEN HANGERS EXPRESSED IN FEET.
2. PROVIDE A HANGER WITHIN 6 INCHES OF ALL DROPS TO SPRINKLER HEADS WHEN USING CPVC PIPE.
3. STEEL PIPE IS NOT ALLOWED IN SIZES LESS THAN 1 INCH.
4. ** INDICATE INFORMATION THAT IS NOT AVAILABLE.
5. CTS = COPPER TUBE SIZE.
6. IPS = IRON PIPE SIZE.
7. — DENOTES LOCATION OF PIPE HANGER.

HANGER DETAILS

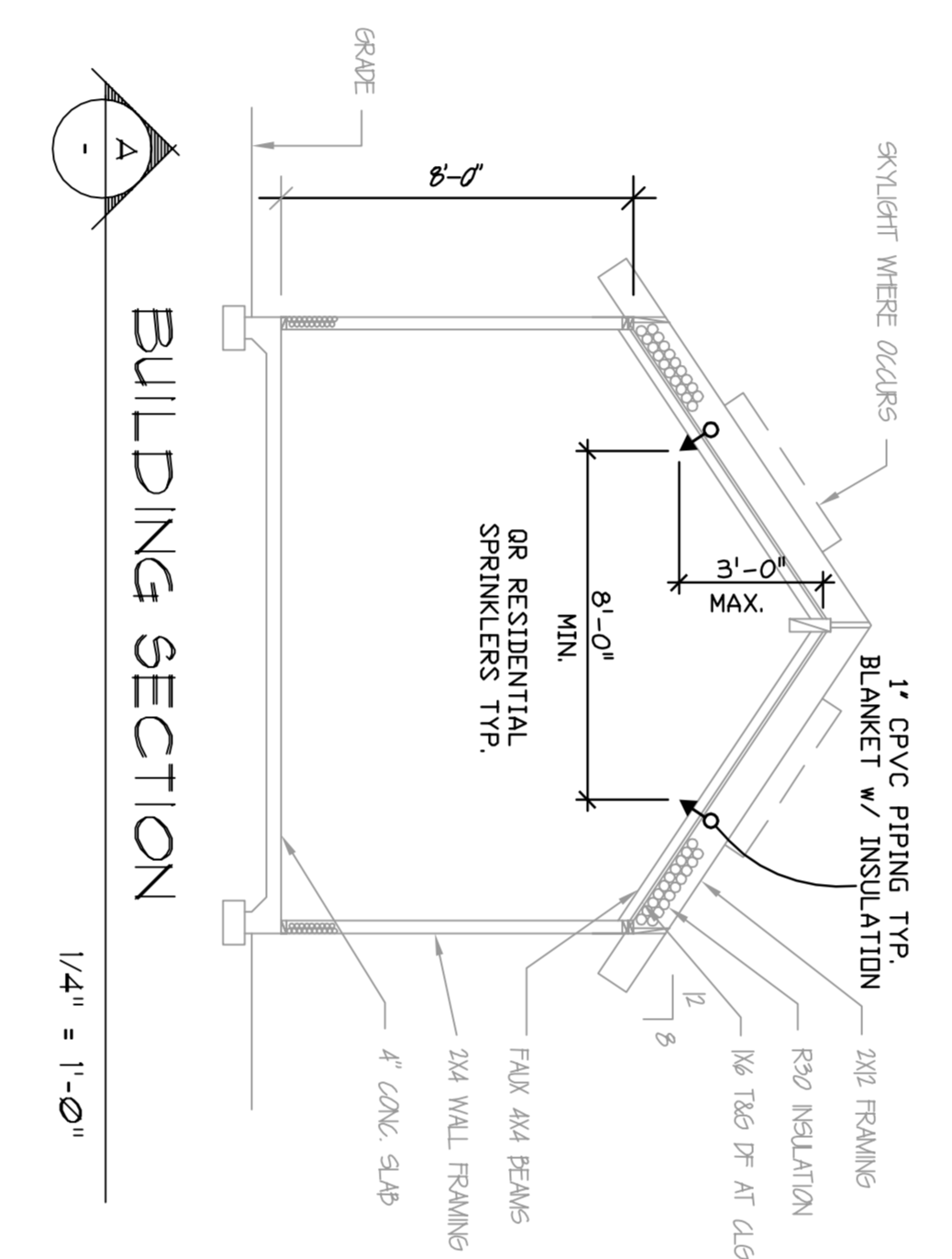


SITE PLAN
 NOTE: THIS PLAN IS FOR HYDRAULIC REFERENCE ONLY. ALL UNDERGROUND INSTALLATION IS BY OTHERS.

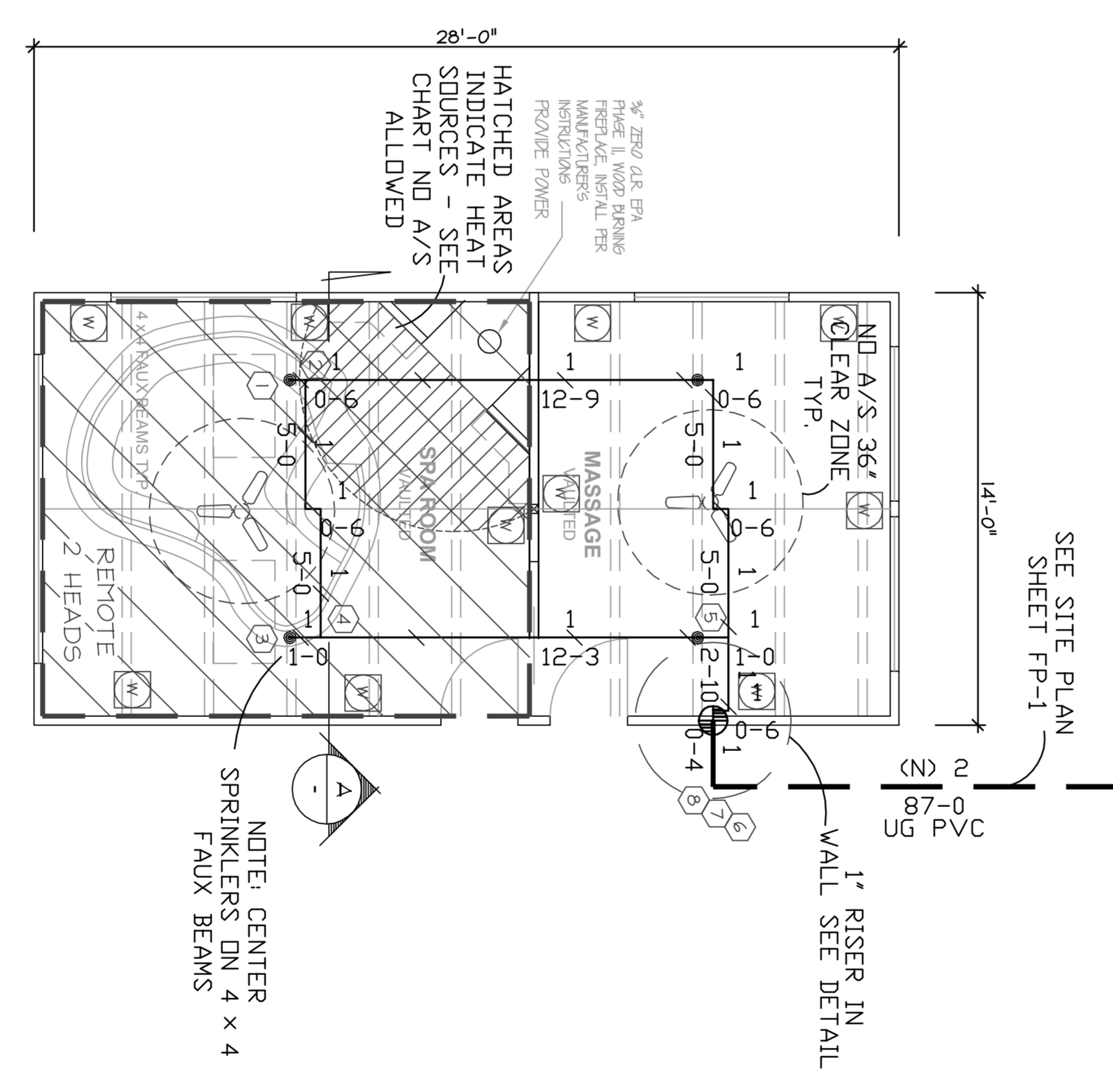




RISER DETAIL
NO SCALE



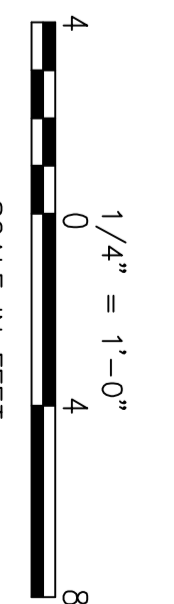
SYSTEM DESIGN DATA		99-2	
Code	99-2	Code	99-2
Standard	2 MOST HYDRAULICALLY DEMANDING SPRINKLERS	Standard	2 MOST HYDRAULICALLY DEMANDING SPRINKLERS
Water Supply	N/A	Water Supply	N/A
Flow or Protection	2 HEADS	Flow or Protection	2 HEADS
Owner	TO PROVIDE PUMP CAPABLE OF SUPPLYING 40 GPM	Owner	TO PROVIDE PUMP CAPABLE OF SUPPLYING 40 GPM
Water Supply Information	Static Head: 45', Residual Pressure: 44' @ 100 GPM	Water Supply Information	Static Head: 45', Residual Pressure: 44' @ 100 GPM
Notes	APPROVALS REQUIRED: NEVADA COUNTY CONSOLIDATED FIRE DEPARTMENT	Notes	APPROVALS REQUIRED: NEVADA COUNTY CONSOLIDATED FIRE DEPARTMENT



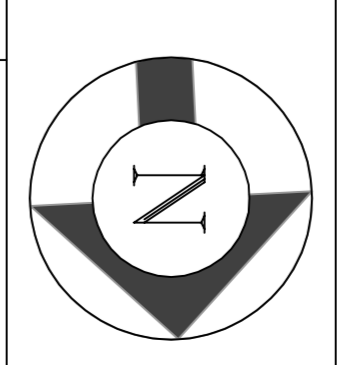
OVERHEAD PIPING PLAN

1. SEE SHEET FP-1 FOR GENERAL NOTES & DETAILS.
2. ALL CEILING HEIGHTS AS NOTED ON PLAN.
3. ALL PIPING IS CPVC UNLESS NOTED OTHERWISE.
4. ALL JOIST PENETRATIONS SHALL BE VERIFIED BY THE STRUCTURAL ENGINEER.

4 TYPICAL L.F.-II CONCRETE RESIDENTIAL 99P
7/16" ORIFICE 1/2" NPT K-4390 5/16" TYPICAL



SCALE IN FEET



CAD To Go

11444 Ball Road
Grass Valley, CA 95949
530-559-9265

OWNERS ADDRESS
AMODEO RESIDENCE
NEW SPA BUILDING
12102 RED GATE
NEVADA COUNTY

APN: 37-440-15
DATE: 3/16/19
DRAWN BY: EDC
SHEET 2 OF 2